

**PLAN SHOWING SURVEY OF 165 RESIDENTIAL PARCELS, 1 COMMUNITY PARCEL, 1 OPEN SPACE AND 10 GREEN AREAS, BEING A SUBDIVISION OF A PORTION OF TCT-201300025, SITUATE SOUTH OF SITTEE RIVER, NEAR SITTEE RIVER VILLAGE, STANN CREEK DISTRICT.**

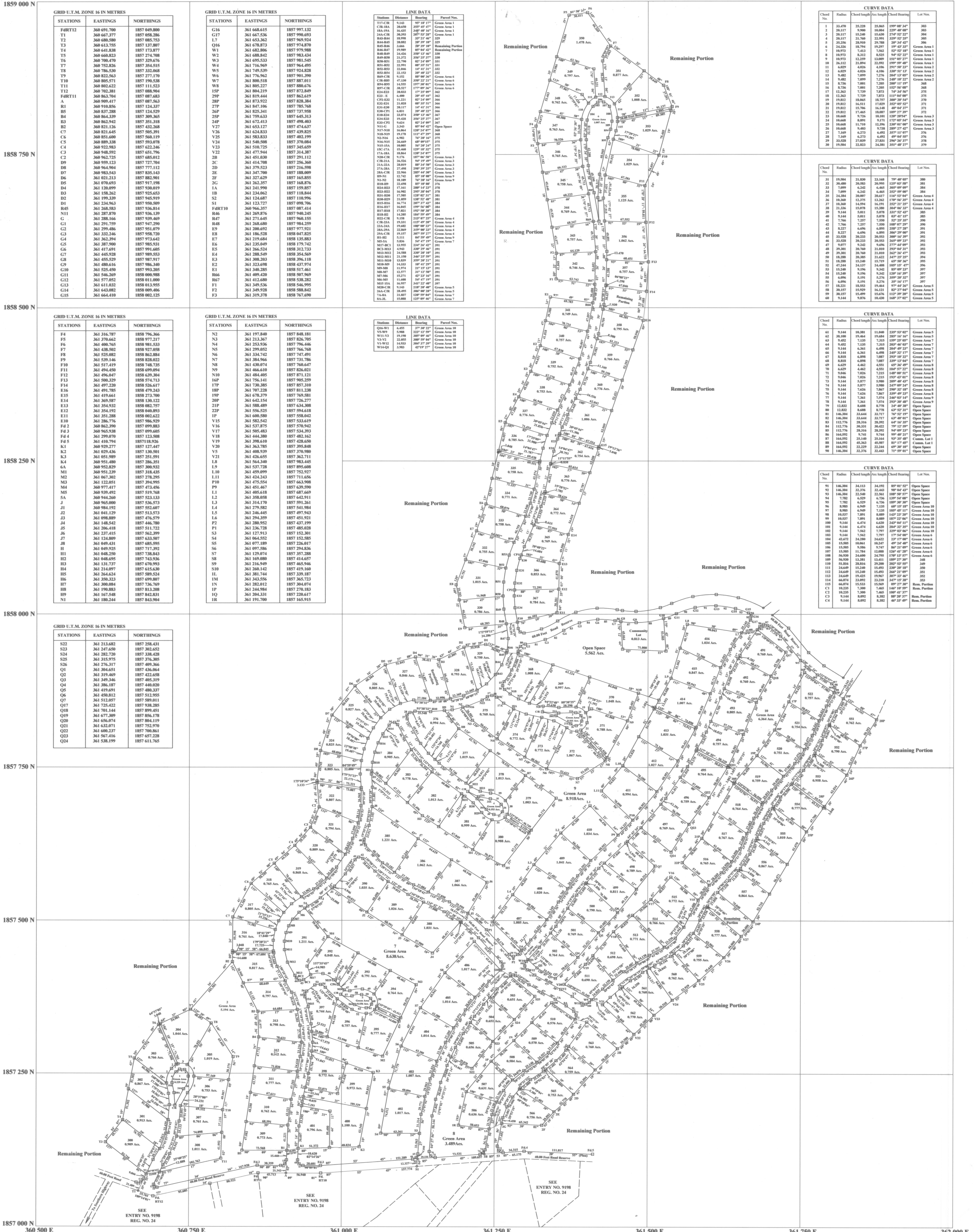
Survey requested by: Sittee River Wildlife Reserve  
 Ref: No. LUA SC 6/13 (102), LUA-201300327, dated 20th June 2014.

**NOTE:**  
 # DENOTES FOUND  
 O DENOTES WOODEN PEG  
 ● DENOTES NAIL ON TREE TRUNK  
 ○ DENOTES CONCRETE PILLAR  
 DISTANCES AND BEARINGS ARE GRID  
 DISTANCES ARE IN METRES AND DECIMALS OF A METRE  
 SCALE FACTOR - 0.99982  
 CONVERGENCE - 0° 24' 08"  
 AREAS ARE GRID  
 ALL ROADS INSIDE THE SUBDIVISION ARE 6.000 FEET WIDE.  
 THE ROADS AROUND THE GREEN AREAS ARE 30.00 FEET WIDE.  
 DISTANCES FOR CURVE DATA ARE TRUE IN METRES.  
 ORIGIN OF COORDINATES - D.A.C.P. OBSERVATION AT F4, RT 12 USING TRIMBLE PRO-RS SUB-METRE.  
 ORIGIN OF AZIMUTH - F4, RT 12 TO F4, RT 11 SHOWN ON ENTRY NO. 9198, REG. NO. 24.

REGISTRATION		AUTHENTICATION		DATE
DATE RECEIVED	EXAMINED BY	<i>Maldez</i>		16/10/2014
FILE REFERENCE	APPROVED BY	<i>[Signature]</i>		16/10/2014
ENTRY NO. 16030	REG. NO. 12	AUTHENTICATED BY		<i>[Signature]</i>
Commissioner of Land and Survey				

Surveyed by: *Rolando A. Rosado* Date: 01/10/14  
**Rolando A. Rosado (Dip. Land Surv.)**  
 Licensed Land Surveyor

Scale: 1/2,500



GRID U.T.M. ZONE 16N METRES		
STATIONS	EASTINGS	NORTHINGS
F4HTT2	360 691.700	1857 998.800
T1	360 667.377	1857 958.286
T2	360 680.580	1857 965.753
T3	360 613.755	1857 937.807
T4	360 641.838	1857 973.877
T5	360 680.623	1857 981.434
T6	360 700.470	1857 981.545
T7	360 752.826	1857 954.515
T8	360 786.530	1857 932.606
W1	360 622.562	1857 971.170
W2	360 680.571	1857 971.911
W3	360 655.533	1857 981.545
W4	360 716.900	1857 964.495
W5	360 749.530	1857 924.828
W6	361 776.962	1857 901.390
W7	361 805.516	1857 871.911
W8	361 805.227	1857 886.676
W9	360 804.219	1857 872.849
W10	360 863.784	1857 862.659
W11	360 909.417	1857 857.563
W12	360 910.856	1857 847.186
W13	360 827.288	1857 825.341
W14	360 864.339	1857 809.365
W15	360 862.642	1857 805.912
W16	360 831.126	1857 812.368
W17	360 824.645	1857 834.833
W18	360 851.600	1857 860.119
W19	360 889.338	1857 893.931
W20	360 922.883	1857 938.143
W21	360 948.929	1857 951.796
W22	360 962.725	1857 965.338
W23	360 959.123	1857 972.704
W24	360 964.904	1857 977.112
W25	360 983.543	1857 983.143
W26	361 021.213	1857 985.851
W27	361 070.093	1857 971.198
W28	361 120.999	1857 959.857
W29	361 158.262	1857 925.653
W30	361 199.339	1857 884.995
W31	361 234.963	1857 838.888
W32	361 268.283	1857 786.814
W33	361 307.870	1857 729.870
W34	361 348.146	1857 668.446
W35	361 391.709	1857 602.680
W36	361 439.447	1857 532.929
W37	361 492.289	1857 459.879
W38	361 550.294	1857 383.294
W39	361 614.482	1857 303.482
W40	361 684.904	1857 220.904
W41	361 761.826	1857 136.826
W42	361 845.338	1857 51.338
W43	361 935.543	1856 38.543
W44	362 032.543	1855 18.543
W45	362 136.543	1854 18.543
W46	362 246.543	1853 18.543
W47	362 362.543	1852 18.543
W48	362 484.543	1851 18.543
W49	362 612.543	1850 18.543
W50	362 746.543	1849 18.543
W51	362 886.543	1848 18.543
W52	363 032.543	1847 18.543
W53	363 184.543	1846 18.543
W54	363 342.543	1845 18.543
W55	363 506.543	1844 18.543
W56	363 676.543	1843 18.543
W57	363 852.543	1842 18.543
W58	364 034.543	1841 18.543
W59	364 222.543	1840 18.543
W60	364 416.543	1839 18.543
W61	364 616.543	1838 18.543
W62	364 822.543	1837 18.543
W63	365 034.543	1836 18.543
W64	365 252.543	1835 18.543
W65	365 476.543	1834 18.543
W66	365 706.543	1833 18.543
W67	365 942.543	1832 18.543
W68	366 184.543	1831 18.543
W69	366 432.543	1830 18.543
W70	366 686.543	1829 18.543
W71	366 946.543	1828 18.543
W72	367 212.543	1827 18.543
W73	367 484.543	1826 18.543
W74	367 762.543	1825 18.543
W75	368 046.543	1824 18.543
W76	368 336.543	1823 18.543
W77	368 632.543	1822 18.543
W78	368 934.543	1821 18.543
W79	369 242.543	1820 18.543
W80	369 556.543	1819 18.543
W81	369 876.543	1818 18.543
W82	370 202.543	1817 18.543
W83	370 534.543	1816 18.543
W84	370 872.543	1815 18.543
W85	371 216.543	1814 18.543
W86	371 566.543	1813 18.543
W87	371 922.543	1812 18.543
W88	372 284.543	1811 18.543
W89	372 652.543	1810 18.543
W90	373 026.543	1809 18.543
W91	373 406.543	1808 18.543
W92	373 792.543	1807 18.543
W93	374 184.543	1806 18.543
W94	374 582.543	1805 18.543
W95	375 086.543	1804 18.543
W96	375 496.543	1803 18.543
W97	375 912.543	1802 18.543
W98	376 334.543	1801 18.543
W99	376 762.543	1800 18.543
W100	377 196.543	1799 18.543
W101	377 636.543	1798 18.543
W102	378 082.543	1797 18.543
W103	378 534.543	1796 18.543
W104	379 092.543	1795 18.543
W105	379 656.543	1794 18.543
W106	380 226.543	1793 18.543
W107	380 802.543	1792 18.543
W108	381 384.543	1791 18.543
W109	381 972.543	1790 18.543
W110	382 566.543	1789 18.543
W111	383 166.543	1788 18.543
W112	383 772.543	1787 18.543
W113	384 384.543	1786 18.543
W114	385 002.543	1785 18.543
W115	385 626.543	1784 18.543
W116	386 256.543	1783 18.543
W117	386 892.543	1782 18.543
W118	387 528.543	1781 18.543
W119	388 170.543	1780 18.543
W120	388 818.543	1779 18.543
W121	389 472.543	1778 18.543
W122	390 132.543	1777 18.543
W123	390 798.543	1776 18.543
W124	391 470.543	1775 18.543
W125	392 148.543	1774 18.543
W126	392 832.543	1773 18.543
W127	393 522.543	1772 18.543
W128	394 218.543	1771 18.543
W129	394 920.543	1770 18.543
W130	395 628.543	1769 18.543
W131	396 342.543	1768 18.543
W132	397 062.543	1767 18.543
W133	397 788.543	1766 18.543
W134	398 520.543	1765 18.543
W135	399 258.543	1764 18.543
W136	399 002.543	1763 18.543
W137	399 752.543	1762 18.543
W138	400 508.543	1761 18.543
W139	401 270.543	1760 18.543
W140	402 038.543	1759 18.543
W141	402 812.543	1758 18.543
W142	403 592.543	1757 18.543
W143	404 378.543	1756 18.543
W144	405 170.543	1755 18.543
W145	405 968.543	1754 18.543
W146	406 772.543	1753 18.543
W147	407 582.543	1752 18.543
W148	408 398.543	1751 18.543
W149	409 220.543	1750 18.543
W150	409 048.543	1749 18.543
W151	409 882.543	1748 18.543
W152	410 722.543	1747 18.543
W153	411 568.543	1746 18.543
W154	412 420.543	1745 18.543
W155	413 278.543	1744 18.543
W156	414 142.543	1743 18.543
W157	415 012.543	1742 18.543
W158	415 888.543	1741 18.543
W159	416 770.543	1740 18.543
W160	417 658.543	1739 18.543
W161	418 552.543	1738 18.543
W162	419 452.543	1737 18.543
W163	420 358.543	1736 18.543
W164	421 270.543	1735 18.543
W165	422 188.543	1734 18.543
W166	423 112.543	1733 18.543
W167	424 052.543	1732 18.543
W168	425 098.543	1731 18.543
W169	426 150.543	1730 18.543
W170	427 208.543	1729 18.543
W171	428 272.543	1728 18.543
W172	429 342.543	1727 18.543
W173	430 418.543	1726 18.543
W174	431 500.543	1725 18.543
W175	432 588.543	1724 18.543
W176	433 682.543	1723 18.543
W177	434 782.543	1722 18.543
W178	435 888.543	1721 18.543
W179	436 990.543	1720 18.543
W180	438 098.543	1719 18.543
W181	439 212.543	1718 18.543
W182	440 332.543	1717 18.543
W183	441 458.543	1716 18.543
W184	442 590.543	1715 18.543
W185	443 728.543	1714 18.543
W186	444 872.543	1713 18.543
W187	446 022.543	1712 18.543
W188	447 178.543	1711 18.543
W189	448 340.543	1710 18.543
W190	449 508.543	1709 18.543
W191	450 682.543	1708 18.543
W192	451 862.543	1707 18.543
W193	453 048.543	1706 18.543
W194	454 240.543	1705 18.543
W195	455 438.543	1704 18.543
W196	456 642.543	1703 18.543
W197	457 852.543	1702 18.543
W198	459 068.543	1701 18.543
W199	460 290.543	1700 18.543
W200	461 518.543	1699 18.543

GRID U.T.M. ZONE 16N METRES		
STATIONS	EASTINGS	NORTHINGS
G16	361 668.615	1857 997.132
G17	361 667.536	1857 998.693
G18	361 653.262	1857 969.253
G19	361 678.873	1857 973.877
G20	361 682.806	1857 979.988
G21	361 749.530	1857 924.828
G22	361 695.533	1857 981.545
G23	361 716.900	1857 964.495
G24	361 749.530	1857 924.828
G25	361 776.962	1857 901.390
G26	361 805.516	1857 871.911
G27	361 805.227	1857 886.676
G28	360 804.219	1857 872.849
G29	361 819.444	1857 862.659
G30	361 873.922	1857 828.384
G31	361 847.186	1857 786.708
G32	361 825.341	1857 737.958
G33	361 799.633	1857 685.313
G34	361 672.413	1857 625.287
G35	361 653.127	1857 474.637
G36	361 624.833	1857 409.825
G37	361 583.833	1857 402.199
G38	361 540.508	1857 370.084
G39	361 451.830	1857 291.112
G40	361 414.708	1857 256.360
G41	361 379.523	1857 216.598
G42	361 347.708	1857 184.009
G43	361 327.629	1857 165.851
G44	361 262.357	1857 168.876
G45	361 241.990	1857 159.857
G46	361 234.062	1857 118.844
G47		