

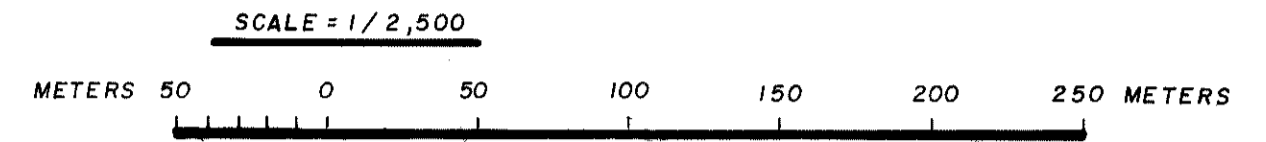
PLAN SHOWING SURVEY OF 16 LOTS, BEING A PORTION OF A PROPOSED SUBDIVISION OF SITTEE RIVER ESTATE, SITUATE SOUTH OF SITTEE RIVER, NORTH OF HUGHES ESTATE, AND WEST OF THE CARIBBEAN SEA, STANN CREEK DISTRICT.

SURVEY REQUESTED BY SITTEE RIVER ESTATE LIMITED

PERMISSION GRANTED BY THE L.U.A. Ref. 244/03(26)

NOTE
 Fd DENOTES FOUND
 □ DENOTES CONCRETE PILLAR
 DISTANCES AND BEARINGS ARE GRID
 DISTANCES ARE IN METERS AND DECIMALS OF A METER
 SCALE FACTOR = 0.999 8583
 CONVERGENCE = 00° 21' 22"
 ORIGIN OF BEARINGS = STATION SF.1 TO STATION SF. ON ENTRY 8673, REG. NO. 24
 ORIGIN OF COORDINATES = STATION SF.1 ON ENTRY NO. 8673, REG. NO. 24

SURVEYED BY *G.A. Perez* DATE *Feb. 18th, 2005*
G. A. PEREZ
 LICENSED LAND SURVEYOR



I CERTIFY THAT ALL THE WORK PERFORMED IN THE FIELD AND IN THE OFFICE BY MY ASSISTANT MR. EDMOND BERRY HAS BEEN CARRIED OUT UNDER MY PERSONAL DIRECTION AND I TAKE FULL RESPONSIBILITY FOR ALL WORK SO PERFORMED.
 DATE *Feb. 18th, 2005* *G.A. Perez*
G. A. PEREZ
 LICENSED LAND SURVEYOR

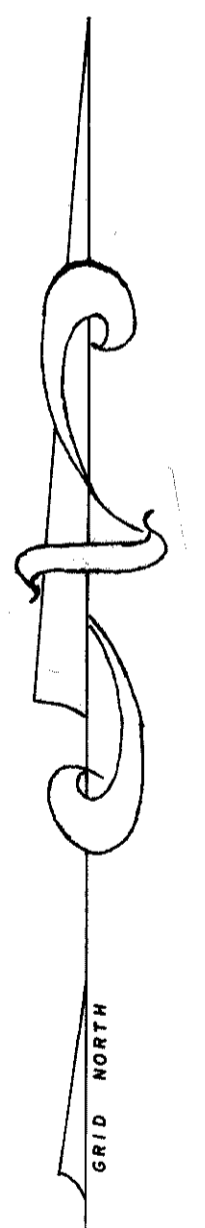
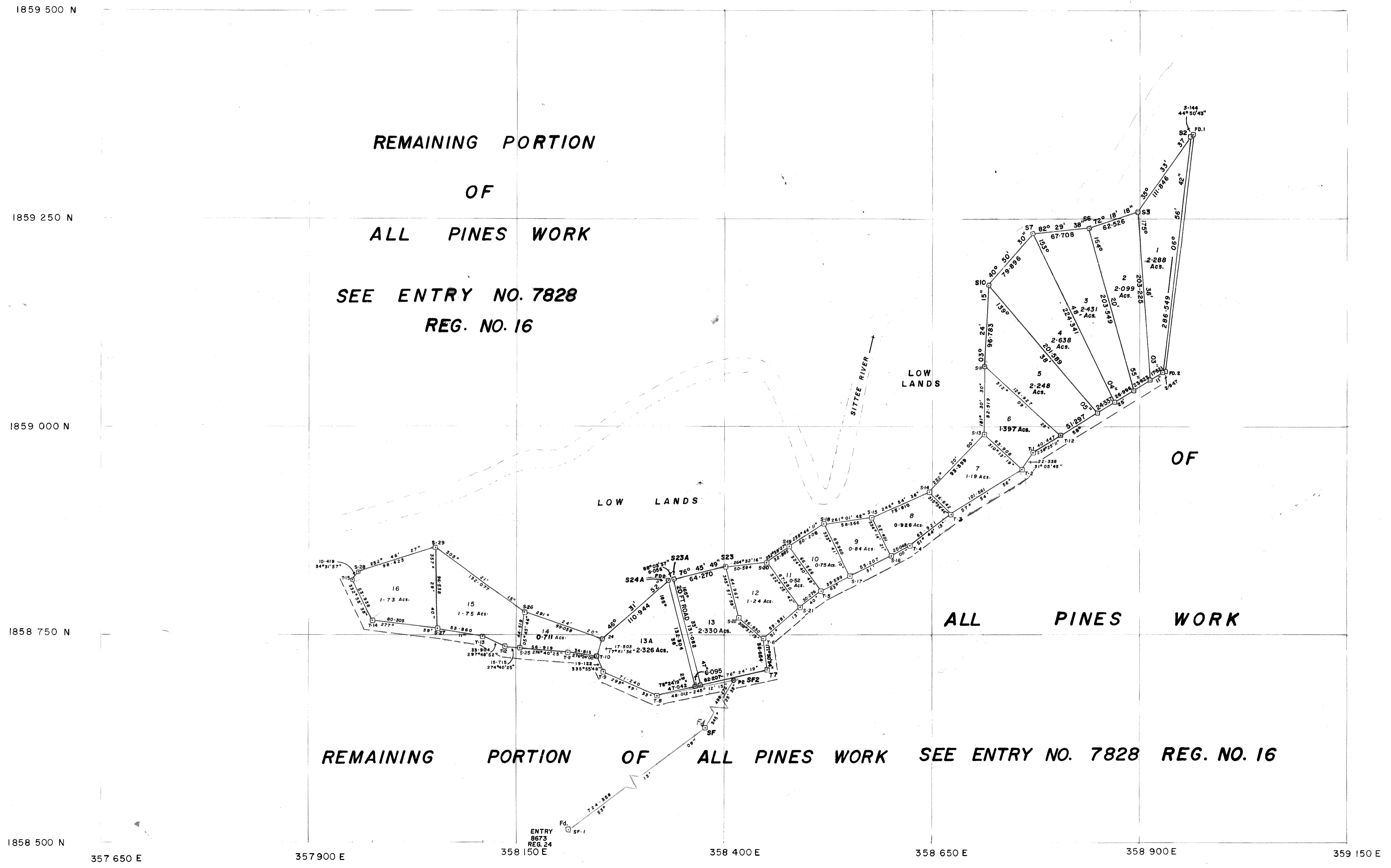
REGISTRATION	AUTHENTICATION	DATE
DATE RECEIVED	EXAMINED BY <i>B. Balder</i>	<i>6/9/2005</i>
FILE REFERENCE	APPROVED BY <i>H. Williams</i>	<i>6-09-05</i>
ENTRY NO. 8994 REG. NO. 24	AUTHENTICATED BY <i>H. Williams</i>	<i>6-09-05</i>
	COMMISSIONER OF LANDS AND SURVEYS	

GRID U.T.M. ZONE 16 IN METERS

Stations	Eastings	Northings
SF-1	357 908.233	1857 781.649
SF	358 488.394	1858 215.362
SF-2	358 363.024	1858 697.607
Fd-1	358 964.811	1859 351.326
Fd-2	358 930.456	1859 066.192
S-2	358 962.593	1859 349.096
S-3	358 897.548	1859 258.110
S-6	358 849.845	1859 196.756
S-7	358 809.662	1859 150.976
S-10	358 766.651	1859 113.288
S-11	358 712.854	1859 073.205
S-12	358 605.464	1858 989.353
T-1	358 771.006	1858 968.173
T-2	358 759.469	1858 949.045
S-13	358 710.671	1858 990.315
S-14	358 647.772	1858 921.271
T-3	358 673.420	1858 885.098
T-4	358 623.231	1858 855.513
S-15	358 578.035	1858 891.541

GRID U.T.M. ZONE 16 IN METERS

Stations	Eastings	Northings
T-17	358 551.388	1858 819.723
S-18	358 520.385	1858 882.439
S-19	358 477.487	1858 856.383
T-5	358 515.954	1858 802.066
S-20	358 451.323	1858 836.435
S-21	358 492.350	1858 783.118
T-6	358 445.576	1858 745.538
S-22	358 416.725	1858 768.684
S-23	358 400.966	1858 831.621
T-7	358 450.990	1858 709.285
T-8	358 319.438	1858 677.472
T-9	358 276.269	1858 706.250
T-10	358 276.269	1858 721.709
S-24	358 251.835	1858 740.375
T-11	358 211.872	1858 727.590
S-26	358 159.610	1858 776.528
T-12	358 139.480	1858 733.508
T-13	358 109.493	1858 749.327
T-14	357 976.523	1858 767.194
T-15	357 951.974	1858 815.222
S-28	357 957.891	1858 823.805
S-29	358 051.889	1858 852.982



APPB E 8984
SITTEE RIVER